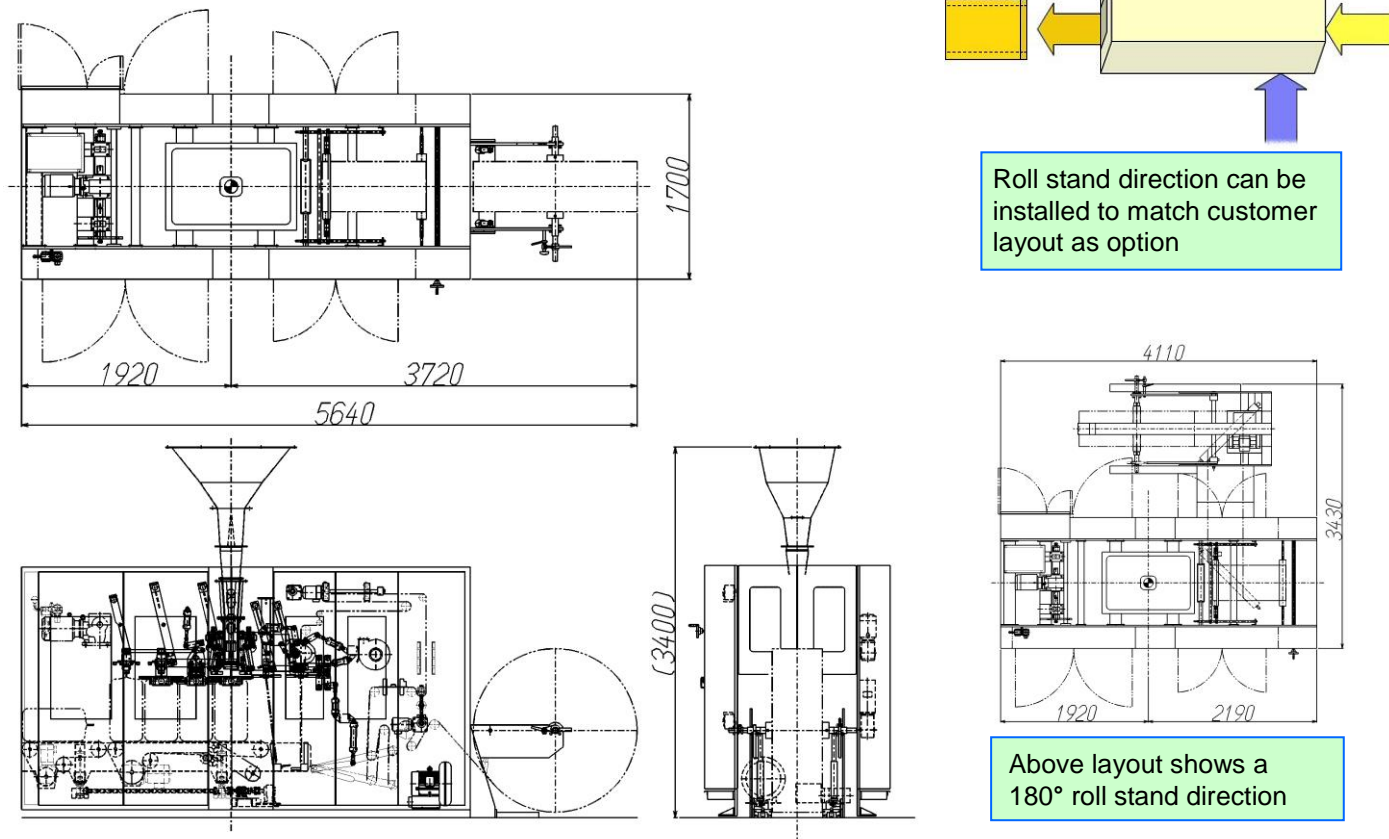


OUTSIDE DIMENSIONS



Specifications

Capacity	2,000 bags/hr (33/min) max	Empty bag length	700~850mm (27.6~33.5in)
Applications	Resin pellets, powders, etc.	Empty bag width	380~450mm (15~17.7in)
Fill range	Up to 50Kg (110lb)	Gusset depth	35~80mm (1.4~3.2in)
FFS tube stock specifications		Distance between gusset bottoms	260mm (10.2in) min
Film thickness	80 to 200µm	Bottom and top seal	Impulse seal
Roll tube type	Gusseted roll tube	Corner seal type	Hot plate
Roll O.D.	1,500mm (59") max	Air consumption	1,700NL/min
Core I.D.	150mm (5.9")	Power requirements	24KVA



NEWLONG INDUSTRIAL CO., LTD.

8-14, Shiratori 4-chome, Katsushika-ku, Tokyo 125-0063, Japan

Tokyo Head Office Sales Dept      PHONE +81-3-3603-2276      FAX +81-3-3603-2253  
 Mechanical Design Engineering Dept      PHONE +81-3-3603-2252      FAX +81-3-3602-2694

NLI Group Home Page and Email Contact

URL <http://nlwww.com/>  
 E-mail [info@nlwww.com](mailto:info@nlwww.com)



AUTOMATIC BAGGING MACHINE

EFS-22

PE GUSSETED FILM BAG MAKING & FILLING SYSTEM



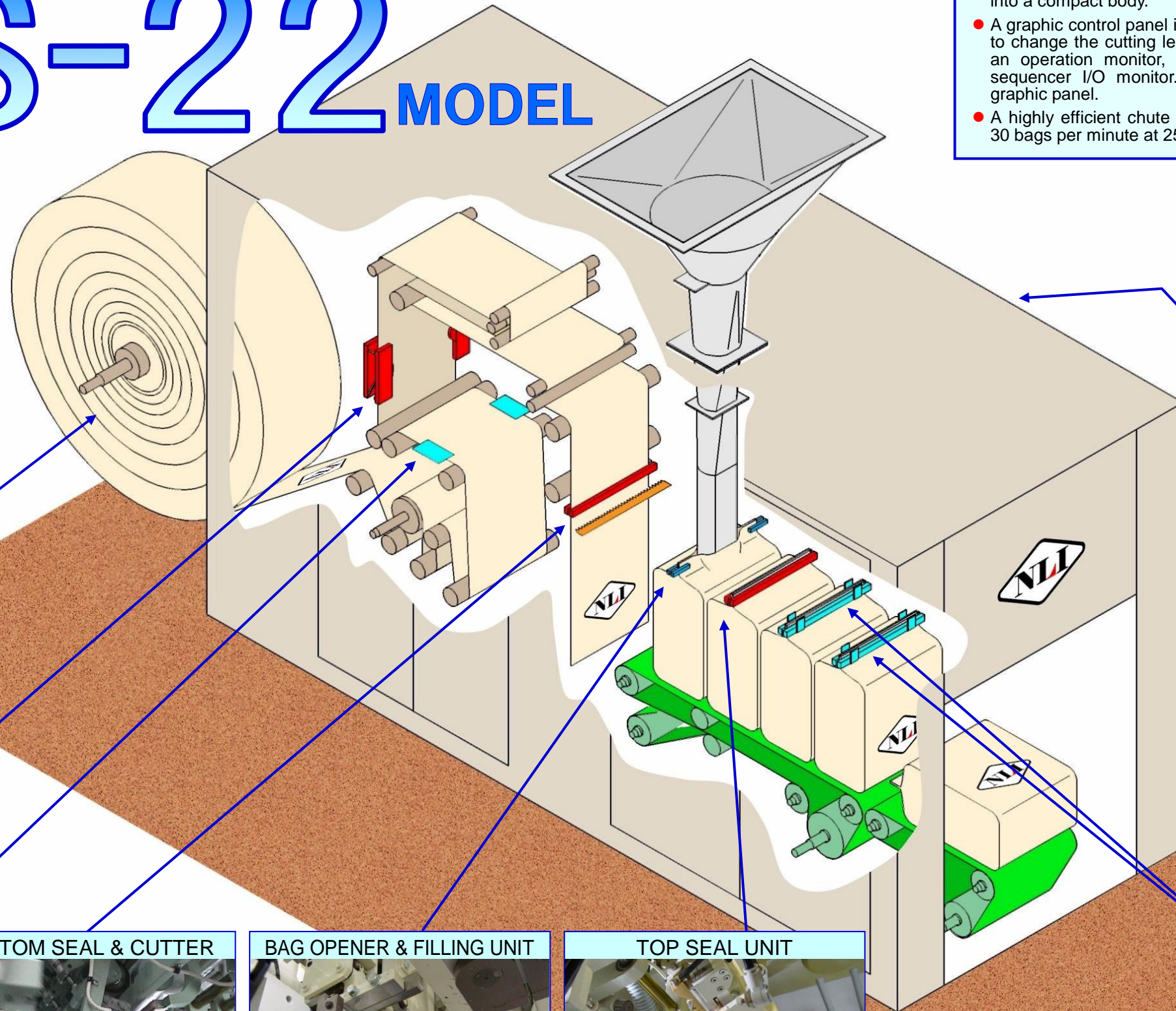


# PE GUSSETED FILM BAG MAKING & FILLING SYSTEM

# EFS-22 MODEL

## FEATURES

- The model EFS-22 roll tube type automatic bag making and filling machine includes bag making, product filling, bag top sealing, and cooling stations. The machine is designed and manufactured using state-of-the-art technology and all functioning components are integrated into a compact body.
- A graphic control panel is used to adjust sealing temperature, timing, and to change the cutting length. The versatile graphic panel also provides an operation monitor, various setting screens, fault displays, and a sequencer I/O monitor. All operational controls are done from the graphic panel.
- A highly efficient chute design can realize high-speed operation of over 30 bags per minute at 25kg (55lb) per bag, depending on conditions.



**SEPARATE ROLL STAND**  
Roll stand can be installed to match customer layout as option (See overleaf)



**CORNER SEAL UNIT**



**PINHOLE UNIT**



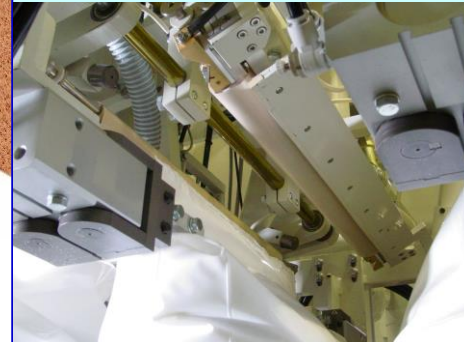
**BOTTOM SEAL & CUTTER**



**BAG OPENER & FILLING UNIT**



**TOP SEAL UNIT**



**GRAPHIC PANEL**



**TOP SEAL COOLING CLAMP UNIT**

